



# **MISSING IN PLAIN SIGHT**

Gary St. Martin - [gary@conventionvideo.com](mailto:gary@conventionvideo.com) - 619 253-2007

# LOGLINE

A genius computer programmer lands a job at a tech company ran by a man she suspects is her birth father and begins to uncover secrets that may lead to answers about her mother's tragic murder.

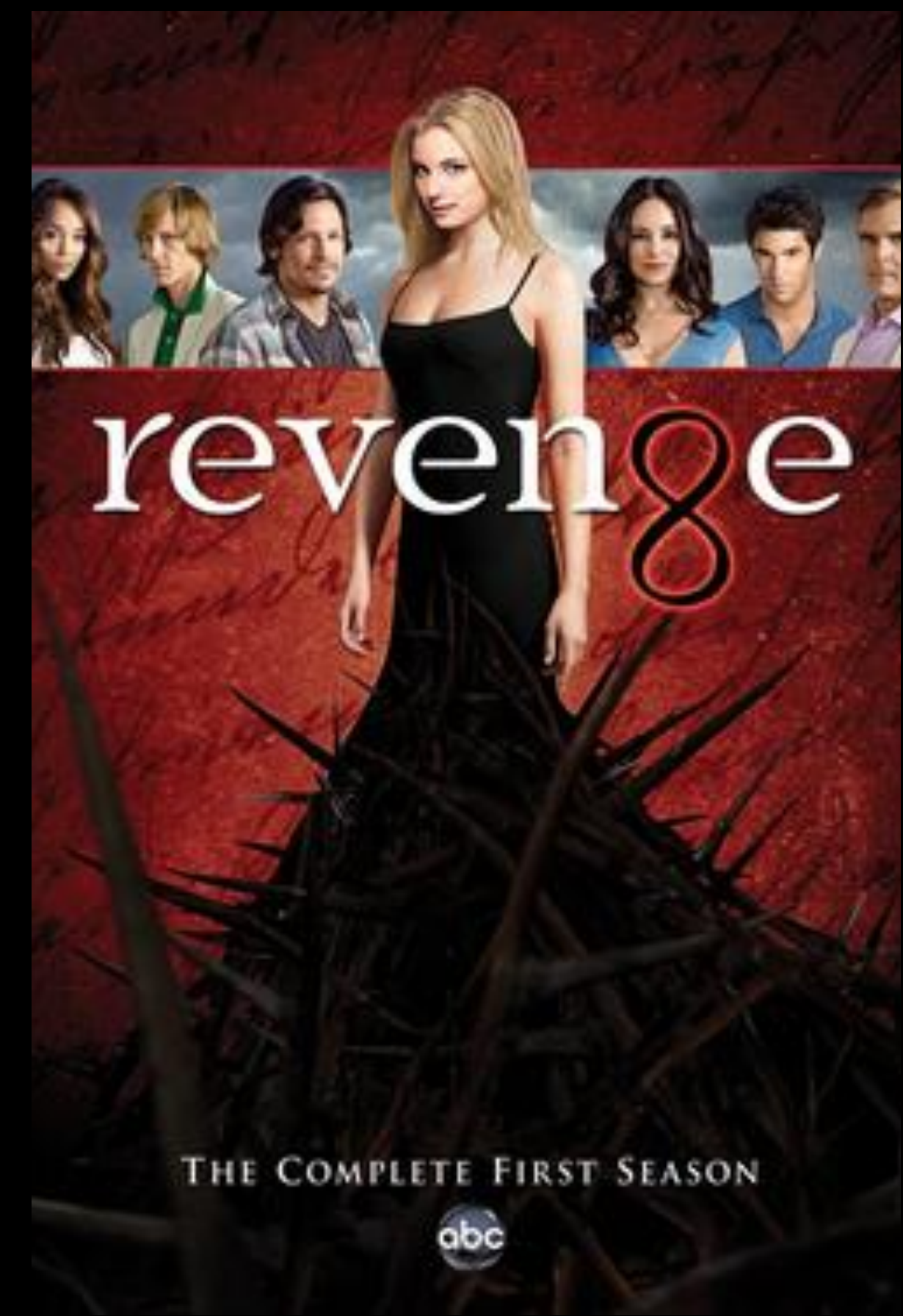
# SYNOPSIS

Daisy Ross shows up in Los Angeles after her mom is murdered. Daisy suspects her estranged father is the culprit and starts working for his Internet Start Up to uncover the truth. But after a few weeks - she vanishes. The unusual disappearance of Daisy Ross comes to the attention of programmer Cindy C. Who begins looking into Daisy's work and life. Accidentally, she discovers an unusual encrypted message within the structure of the program that Daisy was working on. The encryption is complicated to crack, but she figures a way into it. The un-encoded message leads her to an I.P. Address. Cindy access the address, which turns out to contain some very specific information about Daisy's father, creating more questions than answers.





# SHOW CROSS





# DAISY ROSS

## MAIN CHARACTER

Computer Programmer, 25. Daisy changed her name to Ross her mother told her that her father died and his last name was Ross. After her mother's death she discovers that her father is actually George Newton. She doesn't like to get too close and personal with others, as she is afraid of her true identity and motives being discovered.





# CINDY C. WEBSTER

## MAIN CHARACTER

25, Born in Los Angeles highly educated a degree in computer science. An Application computer programmer. She has no idea she has the capability to become a leader and take charge.



# LILLY

## MAIN CHARACTER

Computer Programmer, 28.  
Daisy's best friend back from home. Computer programmer.  
Also daughter to IRENE SUMMERS, Daisy's mom, but doesn't find out she is related to Daisy until after Daisy disappears.





# MAIN ANTAGONISTS

## GEORGE NEWTON

53, Owner and CEO of INNERTECHCORP. He's married to MARY, 46 and they have a daughter, LAURA, 19, who looks very similar to Daisy, same color hair, eyes and approximately the same height.



## BILLY FILLMORE

51, Computer Information System Manager. George's business partner. Together George and Billy hold the secret behind Daisy's mom's death





# PILOT

Irene Summers, a recluse who lives in the backwoods in Canada, gets murdered. Her daughter, Daisy, discovers a wedding book stuffed in the back of one of her mother's drawers, and she now suspects she might be the illegitimate child of George Newton, a software developer in Redondo Beach California. She thinks George had something to do with her mother's murder, and secretly joins the company as a programmer to find out if he's involved.

Daisy packs up and moves to L. A and gets a job at Innertechcorp, and plants herself right inside of the structure of Innertechcorp. She then places encrypted messages, in code, inside the projects she is working on. She also plants a virus into the company network, so she can spy on the inner working of his company.

After an exhausting search of the company's network. Daisy realizes the information she's looking for is in a private server in George's office. She hires a private investigator to help her break into his office, hack into his private computer servers, and plant a virus so she can dig in unsuspectedly into George's private servers. Along the way daisy befriends Cindy C.

Two employees of the company decide to sabotage Daisy, because they are jealous she is getting promoted, which then dumps suspicion right on top of her. Billy then confronts her, blaming her for sabotaging the company

After a confrontation with George's partner Billy. Daisy disappears. After a few days of looking, the police get involved. Worried about daisy, Cindy C begins digging through Daisy's projects, then discovers an unusual encrypted message buried inside. The encrypted message is an investigative report on Innertechcorp, and George and Billy.

# EPISODE CONCEPTS

## EPISODE 1: "THE BEGINNING"

*Daisy moves to L.A. to uncover the mystery of her mother's murder. After working for her estranged father at a computer tech company, Daisy mysteriously disappears.*

## EPISODE 2: "HIDDEN MESSAGES"

*Cindy C becomes protagonist, when she discovers more encrypted clues embedded in Daisy's work and she starts following the clues.*

## EPISODE 3: "FAMILY TIES"

*Daisy's half-sister, Laura, discovers through Cindy C that Daisy is her sister, and she starts digging deeper into the case...*

## EPISODE 4: "DUG TOO DEEP"

*Lilly starts looking in Chicago to research clues about their mother's death and is about to make a breakthrough when a mysterious figure appears and attacks her...*

## EPISODE 5: "2 TRUTHS AND A LIE"

*We get a peak of what Daisy has been up to, her work with the psychic and the trail of clues she has been leaving for Cindy C when she discovers Lilly is her sister and is now missing. Daisy doesn't know if Lilly is still alive but she will find out.*

## EPISODE 6: "SIGNED, SEALED, DELIVERED"

*Laura begins to suspect her father is hiding something when he decides to send her to school in Paris, and Cindy C. meddles in his plans*

## EPISODE 7: "THE PATH TO SALVATION"

*It is uncovered where Lilly has been taken, and Daisy comes to her rescue.*

## EPISODE 8: "SISTERHOOD"

*Ending the season, all the women come back together, Daisy, Lilly, Cindy C, and Laura, to confront George and Billy once and for all.*



# FUTURE SEASONS

## SEASON 1:

Daisy works along with Cindy C and her two half sisters to uncover the mystery of her mother's murder.

## SEASON 2:

Now that the company is in Daisy's control, they have to uncover who is sabotaging them.

## SEASON 3:

After the heartbreak and loss of the previous season, Daisy must overcome her broken trust with her sisters in order to get justice for Cindy C





# TONE

The tone of the series is mysterious, it keeps you on the edge of your seat. Full of conspiracies and backstabbing, you don't know what is going to come next.

It also takes on a sense of drama, as it deals with multiple women uncovering family secrets and dealing with loss.





